

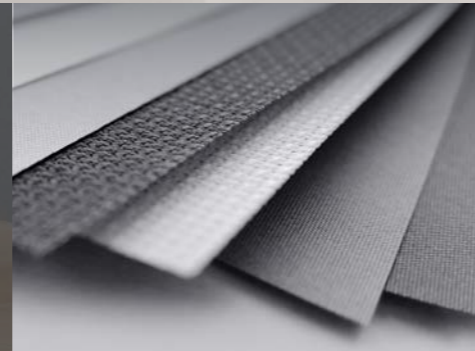
ComfortScreen

Affordable and sustainable



Metallised polyester screen
100% PVC free

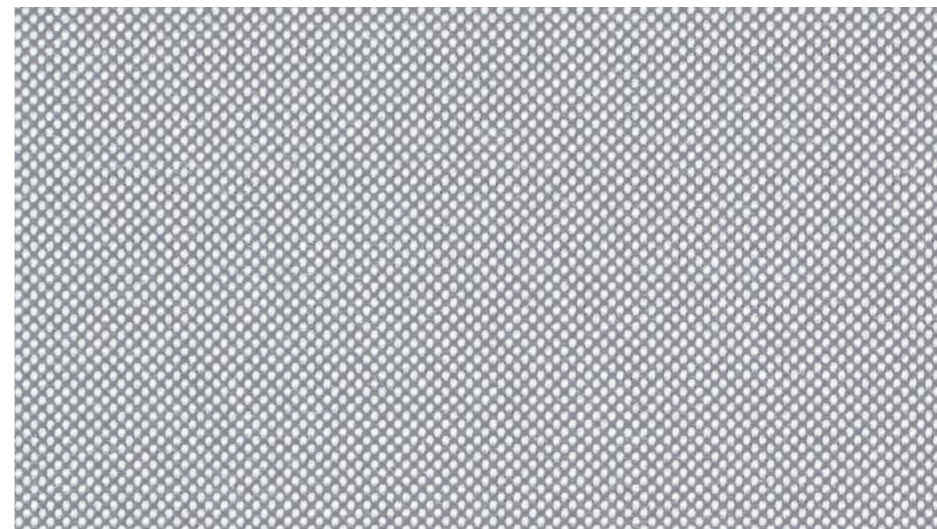
- Great view outside
- Excellent value / performance ratio
- Heat and glare control
- Easy to process



Verosol

Expand your comfort zone

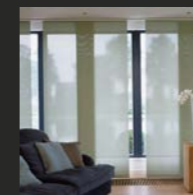
Nr. 122039000002707



Applications for ComfortScreen:



Roller Blinds



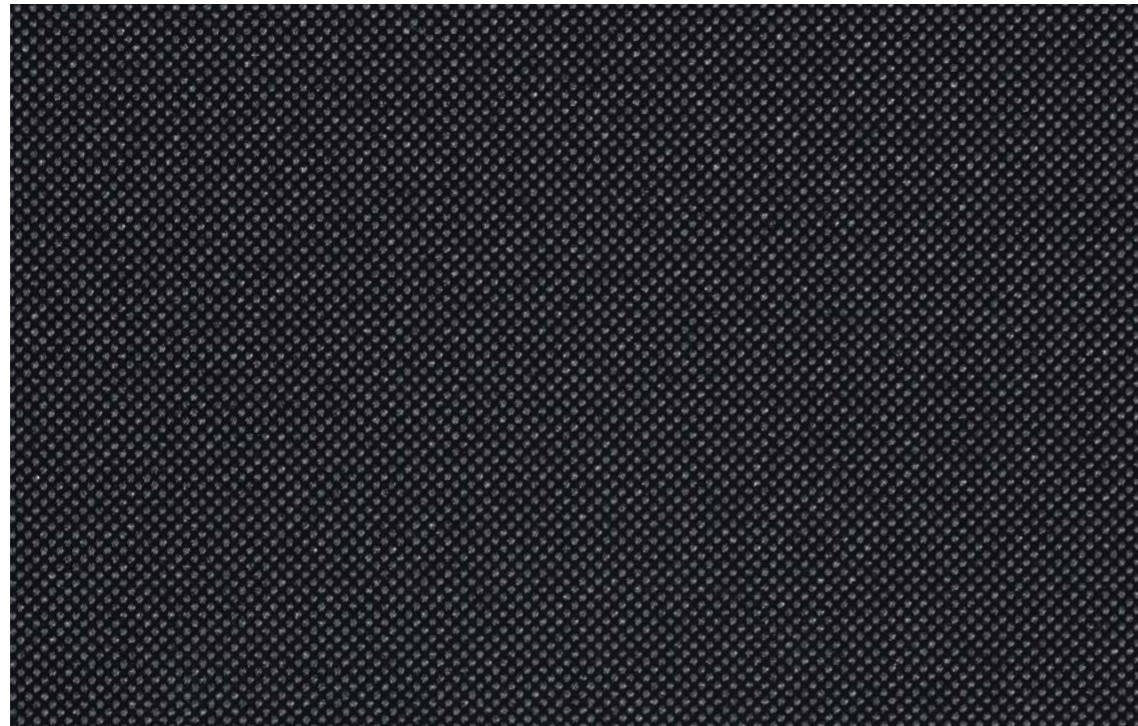
Panel Tracks

Verosol

Expand your comfort zone



Transparency

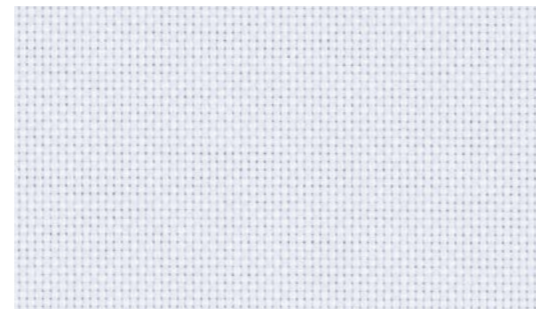


103  3% OF

Colours



Black
ED01 (011)



White
ED01 (031)




Grey
ED03 (033)












Dark Beige
ED04 (034)






The colours shown may vary from the supplied fabric due to batch variation in the printing process. Please visit www.verosol.com to order samples of your choice.
 Customer favourites

Specifications ComfortScreen

	Composition	Polyester
	Weight (g/m²)	250
	Thickness (mm)	0.44
	Width (cm)	280 max.
	Openness factor (OF)	3%
	IR emissivity (metal side)	0.32
	Flame retardant standards	EN 13501-1 B-s1,d0, DIN 4102 B1, NFPA 701, BS 5867 part 2 type B, EN 13773 Class 1, AS/NZS 1530.3 (0-0-0-2)
	Environmental standards	OEKO-TEX Standard 100 Class IV, HPD2.1, RoHS2, REACH, Greenguard (LEED), Greenguard Gold, PVC free, Formaldehyde free, Halogen free, Phthalate free, Antimicrobials free

	White ED01	Black EB01	
	Solar reflection outside	62%	62%
	Light transmission	7%	4%
	Visual contact according to EN 14501	2	2
	Glare control rating according to EN 14501	2	3

	Solar control double glass (glazing D EN 14501)	Glazing performance	White ED01	Black EB01	Performance improvement (max.)
	Light transmission LT-value	60%	5%	3%	95%
	Solar heat gain g-value / SHGC	32%	19%	19%	41%
	Insulation U-value (W/m²K)	1.1	0.8	0.8	27%

Optical properties are measured according to EN 14500, ISO 9050, ASTM C1371 & EN 410. For more information about technical data, energy savings and worldwide distribution, refer to www.verosol.com. Disclaimer: The technical data is based on average data and is subject to production tolerances. All technical details per colour available upon request. Subject to misprints, errors and technical modifications.

